

Spring 2022

51035 - Q2NL-0322

Spotlight



enterprise car sales

CAR SALE



Auto Rates as low as **2.25% APR*** **OR**

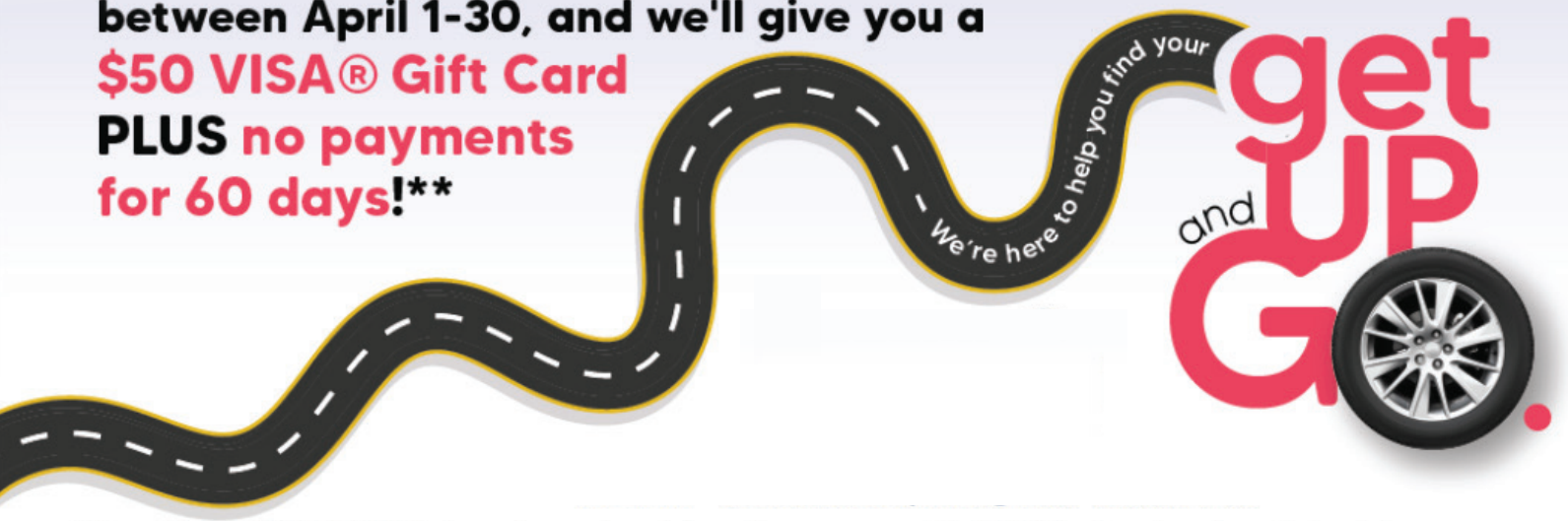
Reduce already low auto loan rates up to an additional **1/2% APR***

*APR = Annual Percentage Rate. Some restrictions apply. See a loan officer for details.

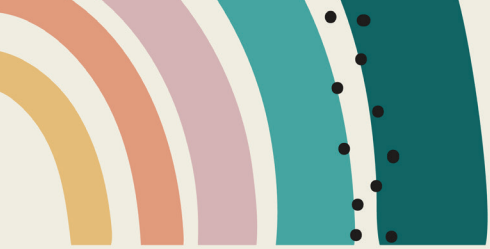
THALIA BRANCH

FRIDAY, APRIL 29 • 9AM-5PM
SATURDAY, APRIL 30 • 9AM-1PM

Get pre-approved and purchase a vehicle between April 1-30, and we'll give you a **\$50 VISA® Gift Card PLUS no payments for 60 days!****



**To qualify for \$50.00 VISA Gift Card, member must apply for and be pre-approved by BMFCU for financing of an auto loan between 4/1/2022-4/30/2022. Member must then purchase vehicle and close loan with BMFCU by 4/30/2022. Gift card will be presented to member within 72 hours of loan closing. One gift card per new loan. No payment period only applicable to the first 60 days of the loan. Interest will begin to accrue as of the loan date. All loans are subject to BMFCU lending guidelines. BMFCU reserves the right to end this offer at any time.



SAVE SMALL. DREAM **BIG.**
at your credit union™

STOP BY AND PICK UP YOUR FREE FLOWER SEED BOOKMARK.

Simply plant the star-shaped insert and watch up to 13 flower varieties bloom!

BEACH MUNICIPAL FCU WANTS TO HELP YOUR KIDS

fulfill their big dreams.

Dreaming big doesn't mean you need to start with big actions. The first small step is usually the hardest, but once it's taken, you can use momentum to propel you forward. This year's theme for National Credit Union Youth Month is "Save Small. Dream Big at your credit union." It uses the image of a magical rainbow with a wish-fulfilling gold star at the end. We want to tell young members that their dreams are attainable, no matter how big they are.

We have tools to help fulfill these dreams. With a Long John Saver Kids Club account, young members can watch their savings grow "like magic." The earlier they start savings, the more it will grow and the easier it will be to achieve their dreams. Learning this good financial habit at a young age will set them up on the path of successful financial well-being.

Stop by the branches during the month of April, and let Long John Saver and his friends help empower your kids to save for their future.



DON'T TRASH YOUR IDENTITY SHRED IT!

Did you know that every 70 seconds a thief steals someone's identity? Don't let it be yours

SHRED DAY:

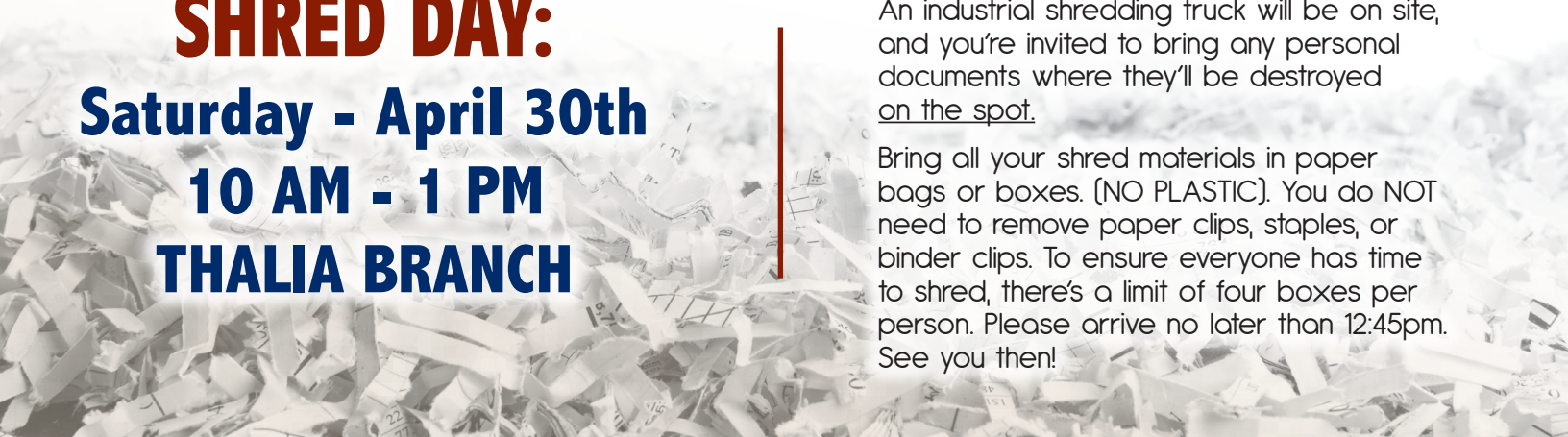
Saturday - April 30th

10 AM - 1 PM

THALIA BRANCH

An industrial shredding truck will be on site, and you're invited to bring any personal documents where they'll be destroyed on the spot.

Bring all your shred materials in paper bags or boxes. (NO PLASTIC). You do NOT need to remove paper clips, staples, or binder clips. To ensure everyone has time to shred, there's a limit of four boxes per person. Please arrive no later than 12:45pm. See you then!



Camp Millionaire™

Financial Wisdom for Life

Hey Parents! Here's a fun, interactive just **MONEY CAMP** for rising 7th and 8th graders.

Camp Millionaire uses an innovative day camp format to provide rising 7th and 8th graders with the financial decision-making tools they need to create financial independence. Through fun-filled games, activities, group exercises and a field trip to your credit union, kids learn how to be responsible for their own financial futures.

Enrollment is on a first come, first serve basis.

We do a lot of team activities, so it's really important for your child to attend all five days of camp.

Lunches and am/pm snacks will be provided each day. All students will receive a Camp Millionaire workbook, t-shirt and other materials.

When: July 18-22, 2022

Time: 9am-4pm
First Day Registration: 8:45am

Where: Virginia Cooperative Extension, 2449 Princess Anne Road, Municipal Center, Bldg. 14

Cost: \$65 non-refundable
\$80 late registration (after June 3)

Please visit our website to register.



Who knew staying at home could be so exhausting?

Fortunately, we're here
to help you find your

get
and
GUP
G

A graphic of a car wheel on a road. The road is a black line with white dashed lines, curving from the left and right towards the center. A large, stylized letter 'G' is positioned in the center of the road, with a car wheel on top of it. The wheel is black with a silver hubcap. The background is a light yellow gradient.

Auto Rates as low as

2.25%^{APR*}

OR

Reduce already low
auto loan rates up to
an additional **1/2%^{APR*}**

*APR = Annual Percentage Rate. Some restrictions apply. See a loan officer for details.



AT CITY OF VIRGINIA BEACH NIGHT!

WE ARE GIVING AWAY 100 TICKETS TO THIS EVENT.
RESERVATIONS MAY BE SUBMITTED THROUGH OUR WEBSITE.
LIMIT 4 TICKETS PER RESERVATION

WHAT: Start off your summer with the Norfolk Tides at City of Virginia Beach Night.

WHEN: Wednesday, July 13th
Game starts at 6:35pm



Holiday Closings

Beach Municipal Federal Credit Union will be closed in observance of the following holidays:

MEMORIAL DAY

Monday, May 30

JUNETEENTH

Monday, June 20

INDEPENDENCE DAY

Monday, July 4

LOCATIONS

Thalia Branch

4164 Virginia Beach Blvd.
Virginia Beach, VA 23452

LOBBY HOURS

Mon. - Thurs. 9am - 5pm
Fri. 9am - 5:30pm
Sat. 9am - 1pm

DRIVE-THRU HOURS

Mon. - Fri. 8:30am - 5:30pm
Sat. 9am - 1pm

Princess Anne Branch

2440 Princess Anne Rd.
Virginia Beach, VA 23456

LOBBY HOURS

Mon. - Thurs. 9am - 5pm
Fri. 9am - 5:30pm
Sat. 9am - 1pm

DRIVE-THRU HOURS

Mon. - Fri. 8:30am - 5:30pm
Sat. 9am - 1pm

MORTGAGE DEPARTMENT HOURS

(THALIA BRANCH ONLY)
Mon. - Fri. 9am - 5pm

P.A.T. (Phone Audio Teller)
800.391.9007

WEB

beachmunicipal.org

IMPORTANT PHONE NUMBERS

Main: 757.333.7787
Main Fax: 757.333.7868

CHIEF EXECUTIVE OFFICER

Gerri Metzger

BOARD OF DIRECTORS

Nianza Wallace

Chairman

Teresa Tatem

Vice Chairman

Lois Ritger

Secretary

Joelle Talbot

Treasurer

Doug Guevara

Board Member

Shane Hughes

Board Member

Charity Stone

Board Member



Federal Credit Union

beachmunicipal.org

SUPERVISORY COMMITTEE

supervisorycomm@beachmunicipal.org

P.O. Box 56552
Virginia Beach, VA 23456

Chairman, Teresa Tatem
Member, Nina Gilbert
Member, Talmadge Piland
Member, Kirsten Schwartzner

NMLS #596474

